



2025

Chonnam National University

Exchange / Visiting Program Guide



Gwangju

Population
1.4 million

City of
Human Rights

Korea's First
AI Meta City

Int'l Safe
Community



Seoul

Gwangju



1 hr by plane



2 hrs by KTX



3 hrs by car

Yeosu



1 hr by plane



3 hrs by KTX



4 hrs by car

Yeosu

Population
267,816

City of Marine
Tourism

Petrochemical
Industry

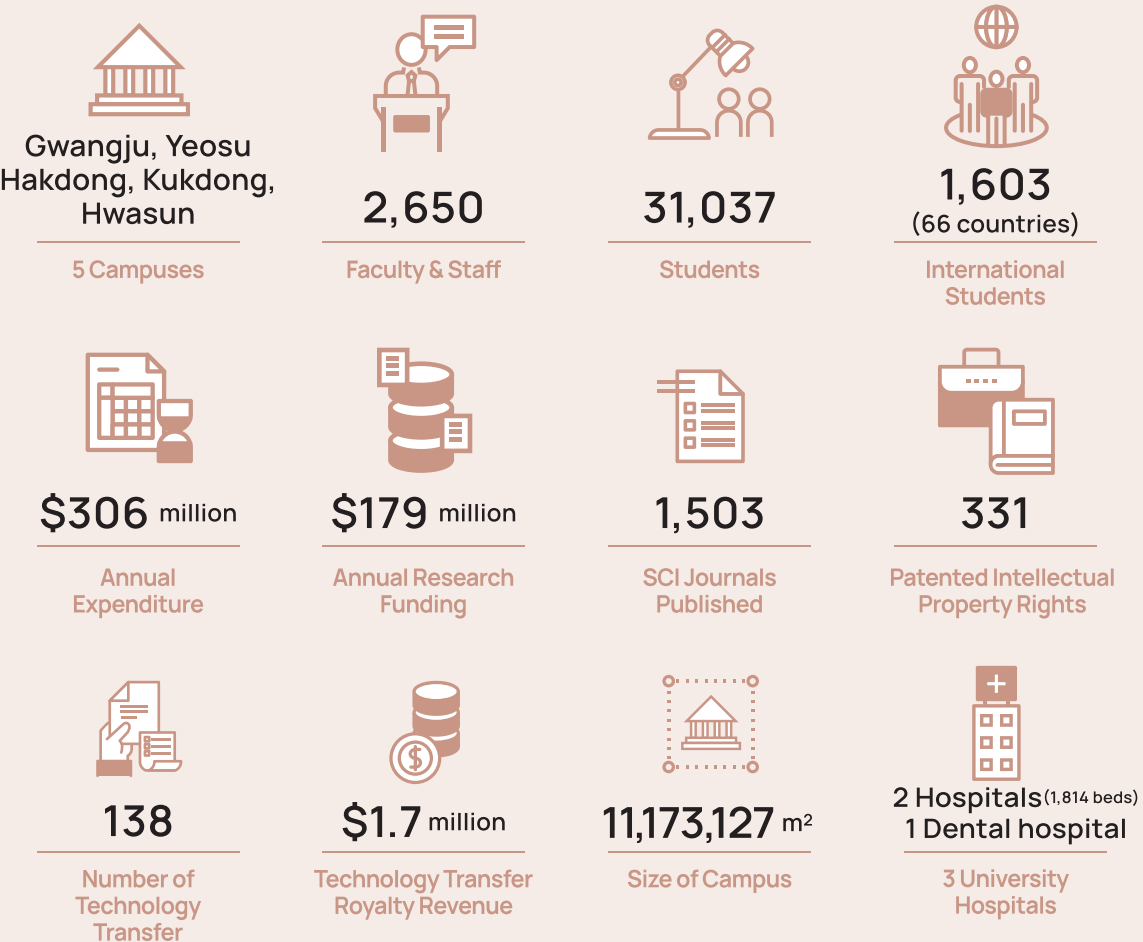
Global MICE
Destination

Chonnam National University

Founded in 1952, CNU has been a cornerstone of higher education, driving national and regional advancement for over 73 years. As one of Korea's most innovative institutions, CNU focuses on developing global leaders and professionals, renowned for its exceptional research, teaching, and leadership within local communities.

Located in the Metropolitan City of Gwangju, CNU comprises 19 colleges and 13 graduate schools, with 2,650 academic staff members. The university serves 31,037 students, including 1,603 international students from 66 different countries, reinforcing its global presence and commitment to a dynamic, inclusive learning environment.

Statistics



*As of April, 2024

Proud CNU : Excellence in Education and Research



Global and Domestic Accreditation

- **Accredited by AACSB** : College of Business Administration (2012-Present)

AACSB : Association to Advance Collegiate Schools of Business



- **Accredited by ABEEK** : College of Engineering (2013-Present)

ABEEK : Accreditation Board for Engineering Education of Korea



- **Accredited by IEQAS** (2012-Present)

IEQAS: International Education Quality Assurance System



- **Accredited by KUAI** (2022-2027)

KUAI: Korean University Accreditation Institute



Global Outreach Programs

- AUN (ASEAN+3 University Network)
Membership University (2017-Present)



- USAC (University Studies Abroad Consortium) (2016-Present)



University Rankings and Recognitions

- Ranked 1st among National Flagship Universities in Korea (2021 THE World University Rankings)
- Ranked 465th in the world ranking and 12 among domestic universities (2024 Center for World University Rankings)
- Ranked 233rd in Biotechnology and Applied Microbiology (2024 US News)
- CNU Business Incubation Center selected as Excellent Institute for 9 consecutive years (2021 Ministry of SMEs and Startups)



Government Sponsored Programs

- CAMPUS-Asia AIMS (Asian International Mobility for Students) Host University (2016-2026 KCUE, Korean Council for University Education in Korea)
- Global Korea Scholarship (GKS) Program for international students
- Korea-Japan Government Scholarship Program (2024-Present)



02

Nomination
and
Application



Academic Information

Office of International Affairs (OIA)

Program	Phone	Email Address
Partnerships	+82 62 530 1273	shannon@jnu.ac.kr
Inbound Program (Outside Asia)	+82 62 530 1270	inbound@jnu.ac.kr
Inbound Program (Asia) / Campus Asia-AIMS	+82 62 530 1278	inbound2@jnu.ac.kr
Inbound/Outbound (China)	+82 62 530 1272	china@jnu.ac.kr
Outbound Program	+82 62 530 1275	outbound@jnu.ac.kr
International School (Summer / Winter)	+82 62 530 1266	cnuis@jnu.ac.kr
Fax	+82 62 530 1269	
Mailing Address	Office of International Affairs Chonnam National University Global & Research Hub 2F, Suite 214 77 Yongbong-ro, Buk-gu, Gwangju 61186, South Korea	
Office Hours	Mon - Fri 9 a.m. - 6 p.m.	

Important Dates

	Spring Semester	Fall Semester
Academic Period	March 4th – June 24th	September 1st – December 22nd
Nomination Deadline	October 30th	April 30th
A nomination form will be sent to the study abroad coordinators of partner universities via email. All exchange students must be nominated by their home institution first before registering for the CNU online application.		
Application Deadline	November 20th	May 20th
All required documents must be uploaded to the system. CNU does not accept any paper documents via courier or email. The online application system will close promptly after the deadlines listed above.		

*The dates are subject to change.

Nomination and Application

international.jnu.ac.kr/Inbound/Incoming/OverView



This information is applicable only to candidates for the incoming student exchange program.



Nomination

Qualified students will be selected and nominated online by their home universities.

- No minimum language score or CGPA requirement from CNU



Application

Online application should be completed on the CNU OIA website.

- international.jnu.ac.kr → Inbound Programs → Incoming Exchange Students → Application

Required Documents

	OECD (Based on student's nationality)	Non-OECD
Scanned Copy	<ol style="list-style-type: none"> 1. Online application 2. Valid passport 3. Academic transcript of Home University in English 	<ol style="list-style-type: none"> 1. Online application 2. Valid passport 3. Academic transcript of Home University in English
Original Copy	None	<ol style="list-style-type: none"> 1. Enrollement Certificate of Home University (Apostille) 2. Bank Balance Certificate <ul style="list-style-type: none"> ※ More than 5,000 USD per semester ※ Issued within 30 days from the application deadline ※ By mail or courier to CNU OIA



Acceptance

An official acceptance package will be sent to accepted students, containing an Acceptance Letter, Certificate of Admission, and D-2 visa documents.

- Accepted students are advised to wait until they have received their official acceptance package before making travel plans or visiting the embassy/consulate.



Visa

- Visa Type : Student Visa [D-2]

Location: Korean embassy/consulate located in a student's home country

Required documents: CNU Certificate of Admission

*The regulations for obtaining a visa are subject to change

*Regardless of visa exemption agreement, D-2 Visa is a must for an exchange student.

Health Insurance

nhis.or.kr/english
+82-33-811-2000



Korean National Health Insurance

Mandatory nation-wide insurance is required for all international students including exchange students staying in Korea for more than 3 months. This insurance must be purchased even with a similar coverage from their home country. Please note that those who have completed alien registration are eligible for the services.

■ **Cost : 70 USD/month**

■ **Coverages : various including the following benefits**

- Dental treatment
- Oriental medical treatment
- Pregnancy and childbirth-related medical expenses
- Outpatient medical service: 30-60%, varies by medical care institution type and area
- Hospitalization expenses: 20%
- Beneficiaries pay part of the medical expenses.
- The insured is not required to claim benefits after receiving treatment.
- Number and amount of benefits are not limited

■ **Non-coverage : treatment for diseases that do not affect work or daily life**



Inbound Students Healthcare Insurance

A **mandatory** local insurance partnered with CNU

■ **Cost : 60 USD/semester**

Coverage	Maximum
Accidental death and Disability	100,000,000 KRW
Sickness death and Disability	30,000,000 KRW
[Domestic] Accident & Sickness hospitalization	30,000,000 KRW
[Overseas] Accident & Sickness hospitalization	30,000,000 KRW
Evacuation / Repatriation	30,000,000 KRW
Liability of Reparation	100,000,000 KRW
[Nonpayment] Manipulation Therapy	35,000,000 KRW
[Nonpayment] Injection	25,000,000 KRW
[Nonpayment] MRI/MRA	30,000,000 KRW



03

Academic
Information



Areas of Study

Undergraduate Programs

Agriculture & Life Sciences

Agricultural & Biological Chemistry
Animal Science
Applied Biology
Applied Plant Science
Bioenergy Science & Technology
Convergence Biosystems Engineering
Forest Resources
Food Science & Technology
Horticulture
Landscape Architecture
Molecular Biotechnology
Rural & Biosystems Engineering
Wood Science & Engineering

AI Convergence

Artificial Intelligence
Bigdata Convergence
Future Mobility

Arts

Fine Arts Music
Korean Traditional Music Design
Design
Music

Business Administration

Business Administration
Economics

Education

Education
Early Childhood Education
History Education
Geography Education
Ethics Education
Korean Education
English Education
Mathematics Education

Physics Education
Chemistry Education
Biology Education
Earth Science Education
Home Economics Education
Music Education
Physical Education
Special Education

Engineering

Architecture
Biotechnology & Bioengineering
Chemical Engineering
Civil Engineering
Electrical Engineering
Electronic & Computer Engineering
Energy & Resources Engineering
Environmental & Energy Engineering
Industrial Engineering
Materials Science & Engineering
Mechanical Engineering
Polymer Science Engineering
Software Engineering

Human Ecology

Family Environment & Welfare
Division of Food & Nutrition
Clothing & Textile

Humanities

Korean Language & Literature
English Language & Literature
German Language & Literature
French Language & Literature
Chinese Language & Literature
Japanese Language & Literature
History
Philosophy

Interdisciplinary Studies

Self-Designed Interdisciplinary Studies

Medicine

Pre-medicine
Medicine

Natural Sciences

Biological Sciences & Technology
Biology
Chemistry
Earth System & Environmental Sciences
Statistics
Mathematics
Physics

Nursing

Nursing

Pharmacy

Pharmacy

Social Sciences

Cultural Anthropology & Archaeology
Communication
Geography
Library & Information Science
Political Science & International Relations
Psychology
Public Administration
Sociology

Veterinary Medicine

Pre-veterinary Medicine
Veterinary Medicine

Culture & Social Sciences

Chinese Studies
English Studies
Japanese Studies

Graduate Programs

Arts

Art & Design Technology Asian Culture
Fine Arts
Korean Traditional Music
Music
Physical Education

Engineering

Advanced Chemicals & Engineering
Architecture & Civil Engineering
Artificial Intelligence Convergence
Biotechnology & Bioengineering
Chemical Engineering
Electrical Engineering
Electronics & Computer Engineering
Energy & Resources Engineering
Environment & Energy Engineering
ICT Convergence System
Engineering Industrial Engineering
Materials Science & Engineering
Mechanical Engineering
Polymer Engineering

Humanities & Social Sciences

Accounting
Agricultural Economics Anthropology
Business Administration Chinese Language &
Literature Communication
Cultural Studies
Early Childhood Education Economics
Education
English Education
English Language & Literature Ethics Education
French Language & Literature Geography
German Language & Literature History

Honam Studies
Japanese Language & Literature
Korean Education
Korean Language & Literature
Law
Library & Information Science Philosophy
Political Science Psychology
Public Administration Regional
Development Social studies Education
Sociology
Special Education

Interdisciplinary Programs

Archival Studies
Asian Culture
Bioenergy and Biomaterials
Biomedical Engineering
Cultural Properties
Digital Future Convergence Service
East Asian Studies
Electronic Commerce
Global Diaspora Studies
Information Security Convergence
Molecular Medicine
NGO Studies
Perfume and Cosmetics
Photonic Engineering
Public Health
Smart Aqua Farm
Smart City
Social Welfare
Sustainable Architecture ICT Convergence
Teaching Korean as a Foreign Language
Translating Korean Texts in Classical Chinese
Urban Disaster Prevention Safety

Medical Science

Biomedical Sciences
Dental Science
Medical Science
Veterinary Medicine

Natural Sciences

Agricultural Chemistry
Animal Science & Bioindustry
Animal Science & Biotechnology
Applied Biology
Applied Plant Science
Biological Sciences & Biotechnology
Biosystems & Rural Engineering
Chemistry
Clothing & Textiles
Family environment & welfare
Food & Nutrition
Forestry
Geological & Environmental Science
Horticulture
Integrative Food,
Bioscience and Biotechnology
Landscape Architecture
Mathematics
Mathematics & Statistics
Nursing
Oceanography
Pharmacy
Physics
Science Education
Statistics
Wood Science & Engineering
Wood Science &
Landscape Architecture

Professional Graduate

School of Business

School of Culture

Law School

School of Dentistry

Areas with Restricted Enrollment

Enroll in any academic courses except College of Medicine, College of Nursing, College of Pharmacy, College of Veterinary Medicine, and Department of English Education.

Academic Information

Academic Calendar

	Spring 2025	Fall 2025
First Day of Semester	March 4	September 1
Course Add/Drop Period	March 2-8	September 1-7
Mid-term Examination	April 14-25	October 20-24
Last Day of Semester	June 24	December 22
Final Examination	June 18-24	December 16-22

*These dates are tentative and subject to change.

Semester Programs

	Regular Exchange Program	Korean Language Intensive Program
Campus	Gwangju	Yeosu
Credits	6-18	18
Courses	Students may choose any courses offered by CNU except Medicine / Dentistry / Veterinary Medicine/English Education	Intensive Korean: 12 credits Korean culture related studies: 6 credits

Academic Notes

For general exchange students:

- Minimum number of credits to maintain student status at CNU: 6 credits per semester (2 courses)
- Maximum number of courses to take at CNU
 - Undergraduate: 6 courses per semester (students can take up to two (2) graduate courses.)
 - Graduate: 3 courses per semester (students can take up to two (2) undergraduate courses.)

For GKS Scholarship recipients:

- Must take at least one (1) Korean language or culture-related course.

For Campus Asia-AIMS recipients:

- Must take at least one (1) Engineering / AI / International Business depending on the recipient's track.

Language of Instruction

- Korean
- English

Grading System

Grade	Score	GPA	Description
A+	95 ~ 100	4.5	excellent
A	90 ~ 94	4	very good
B+	85 ~ 89	3.5	good
B	80 ~ 84	3	highly satisfactory
C+	75 ~ 79	2.5	satisfactory
C	70 ~ 74	2	fair / sufficient (minimum passing grade)
D+	65 ~ 69	1.5	
D	60 ~ 64	1	
F	0 ~ 59	0	fail

Exchange Student Certificate

The Exchange Student Certificate serves as a Certificate of Registration or Proof of Enrollment at CNU.

- Location: G&R Hub 2F Suite 214 (Office of International Affairs)
- Person In Charge: Student Exchange Program Coordinator
- Cost: Free of charge

Academic Transcripts

One (1) official copy of CNU transcript will be sent directly to the home institution upon completion of the student's studies.

※ CNU does not send the transcript directly to students.

Scholarships

- International exchange students may be eligible for the following scholarships.
- No separate application is needed; selection is automatic.
- Scholarship recipients will be notified via email.

Merit Scholarship

- Eligibility : CNU exchange student with a CGPA of at least 80 out of 100
- Number of Recipients: 5 students per semester
- Benefits : Dormitory fee waiver

Best Partner Scholarship

CNU reviews the balance of exchange students at the end of year. If CNU has sent two (2) or more students than the partner university in the previous year, CNU will award a scholarship to the exchange students from the partner university.

- Eligibility: Exchange students from the partner university
- Number of Recipients: Up to 3 students from the partner university
- Benefits: 500,000 KRW, one semester only

Global Korea Scholarship (GKS)

- Eligibility : Incoming CNU exchange student with at least CGPA 80 out of 100
- Number of Students : 5-10 students per semester
- Benefits
 - Round-trip Flight Ticket Fees
 - Monthly Allowance : 630,000 KRW per month(4 month)
- Application Procedure
 - The list of selected students will be submitted to the Ministry of Education(NIIED).

SNS Scholarship

@studyatchonnam



How to Apply

- Follow @studyatchonnam on Instagram.
- Tag @studyatchonnam.

Post a photo or video showcasing academic and cultural experiences on or off campus with the hashtag #studyatchonnam.

- Benefits : 10,000 KRW per posting
- Winners will be notified via Instagram DM.
- A Korean bank account is required to receive the scholarship.



CAMPUS-Asia AIMS

CAMPUS-Asia AIMS is an undergraduate student exchange program between Korea and ASEAN universities aimed at fostering experts in the ASEAN region. CNU accepts students majoring in Engineering including AI and IoT, Agriculture, and International Business from AIMS partnership universities.

Country	AIMS Partner University	Major
Brunei	University Brunei Darussalam	Engineering / International Business
Indonesia	Institute Technology Sepuluh Nopember	Engineering
Indonesia	Bogor Agricultural University	Agriculture
Indonesia	Institute of Technology Bandung	Engineering
Indonesia	University of Indonesia	International Business
Malaysia	University of Malaya	International Business
Malaysia	University Malaysia Pahang	Engineering
Malaysia	University Technology Malaysia	Engineering
Malaysia	University Kebangsaan Malaysia	Engineering / International Business
Philippines	University of the Philippines	Agriculture / Engineering / International Business
Thailand	Kasetsart University	Agriculture
Thailand	King Mongkut's University of Technology Thonburi	Engineering
Vietnam	University of Transport and Communications	Engineering
Vietnam	Thuy Loi University	Engineering
Vietnam	Thai Nguyen University of Agriculture and Forestry	Agriculture

Programs

1. One-on-One Mentoring Project
2. Korean Cultural Experiences
3. Industry Site Visits

Benefits

- Dormitory fee waiver
- Meal plan fee reimbursement
- Free industrial visits and cultural trips in Korea
- Textbook fee reimbursement
- Certificate of Completion



On-Campus Programs

Cultural Excursions

A day trip to the suburban areas of Gwangju will allow students to enjoy Korean cuisine, interact with locals, and experience various aspects of Korean culture.

Buddy Program

International students will be paired with current CNU students, who will assist with the transition period and support their academic success. This may be the start of a life-long friendship.

Int'l Student Community

CIC (CNU International Students Community)

@cnu_cic_official

Both domestic and international students can gain a deeper understanding of diverse cultures in today's global era by participating in cultural activities, language exchanges, volunteer work, and more.

CIS (CNU International Student Supporters)

@chonnam_oia

In collaboration with the CNU Global Education Center and the Office of International Affairs, this student group organizes various programs for international students, and provides support to enhance their experiences at CNU.



CNU International Summer School

Renowned scholars from Chonnam National University and other prestigious universities worldwide will guide students through an exciting intellectual journey. Participants can take up to 2 courses (6 credits) over the 4-week period and immerse themselves in Korean culture during the CNU International Summer Session.

Program Period: June 30 - July 25, 2025

2025 Course List

Title	Professor	University	Time
Human Resource Management	Javadizadeh, Bahareh	San Francisco State U, USA	09:00 - 11:50
Web Programming and Practice	Crisan, Daniela Alexandra	The Romanian- American U, Romania	
Media English	Shin, Sun Young	Indiana U Bloomington, USA	
Basic Statistics	Kang, So-hee	U of Toronto Scarborough, Canada	
Introduction to Korean History	Im, Chong Myong	Chonnam National University, Korea	
Socio-Economic History of Asia	Seol, Paehwan	Chonnam National University, Korea	
Everyday Korean 1	TBA	Chonnam National University, Korea	
[Graduate] Machine Learning	Usefi, Hamid	Memorial U of Newfoundland, Canada	
Game Theory	Wang, Henry	U of Missouri-Columbia, USA	13:30 - 16:20
Humanities of Love & Violence: Tangles of Transitional Justice	Hancock, Landon	Kent State University, USA	
Seminar in Psychology	Miller Dennis	U of Missouri-Columbia, USA	
Geography of America & Korea	Lembo Arthur	Salisbury University, USA	
International Area Disputes: Peace and Conflict Studies	Schroeder, Steven	U of the Fraser Valley, Canada	
American and British Culture	Jeon, Kyongseon	Columbus State University, USA	
Everyday Korean 2	TBA	Chonnam National University, Korea	
[Graduate] Studies in Existential Philosophy: Martin Heidegger	Korobczak, Pawel	University of Wroclaw, Poland	
[Graduate] International Education Policy	Kim, Elisabeth	California State U-Monterey Bay, USA	
[Graduate] Design and Application of Augmented Reality and Mixed Reality	Kim, Inki	U of Illinois Urbana-Champaign, USA	

*Classes are subject to change based on the number of students.

*All the classes are held on Monday, Tuesday, Thursday, and Friday.

*Students who are juniors and above may enroll in graduate-level courses.

Cultural Experience

 Yeosu Night Cruise Tour	 Gwangju KIA Tigers	 Baseball Game
 Gwangju Traditional Culture Center	 5-18 Memorial Park	 Taekwondo

*The schedule above is subject to change.



04

Life at GNU



Life at CNU

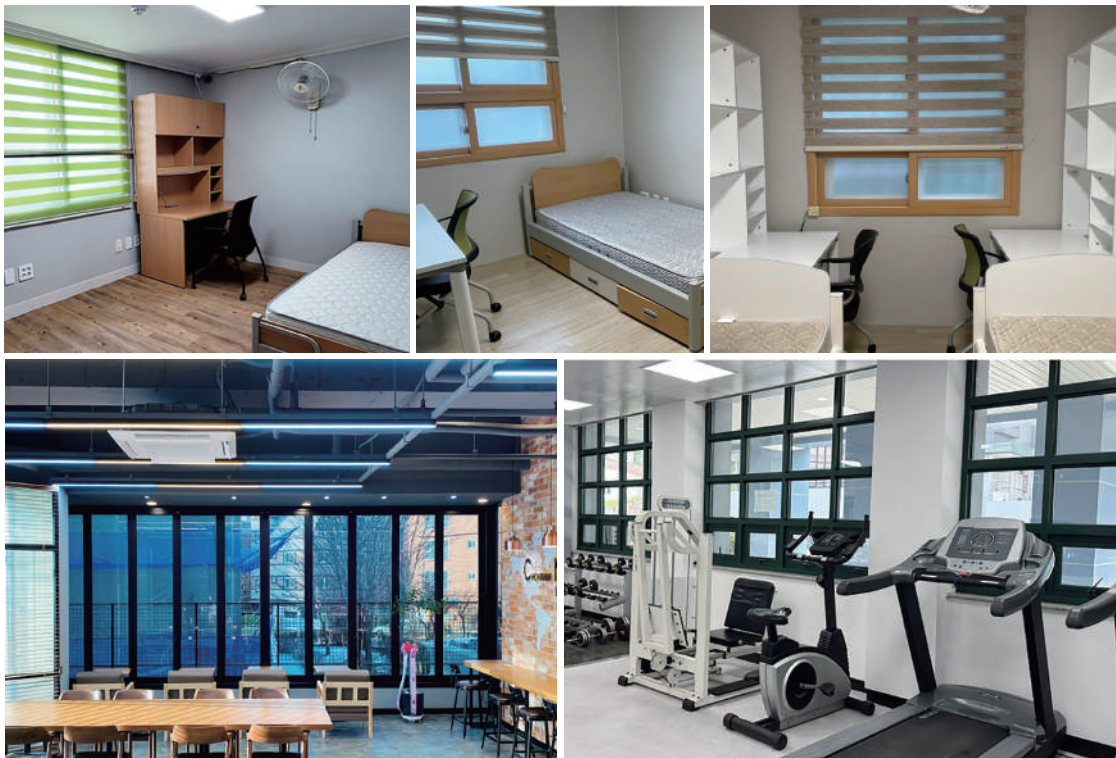
Housing & Meals

Campus	Room Type	Fees per Semester	Amenities
Gwangju	3-Bedroom Apt.	USD 807	Laundry, cooking facility, fitness center, student lounge
Yeosu	3-Bedroom Apt.	USD 424	Similar facilities

Meal Plan (optional):

- From USD 300 to 800 per semester, depending on number of meals/week
- Apply via Dormitory website

dormitory.jnu.ac.kr



Cost of Living (Estimated Monthly)

Category	Estimated Cost (USD)
Housing (on-campus)	150–250
Meals (self-catering)	250–300
Public Transport	50–60
Personal Expenses	150–200
Health Insurance	60–80
Total	660–890

Actual costs vary by student lifestyle and preferences.

Upon Arrival

Immigration Office

- Students must apply for Alien Registration Card (ARC) within 90 days of arrival
- Required for residence, part-time jobs, and bank transactions
- Fee: approx. USD 30
- Assistance provided by CNU Office of International Affairs

CNU Student ID Card

- Issued by your college administration office after course registration
- Required for library access, cafeteria discounts, and student authentication

Transportation

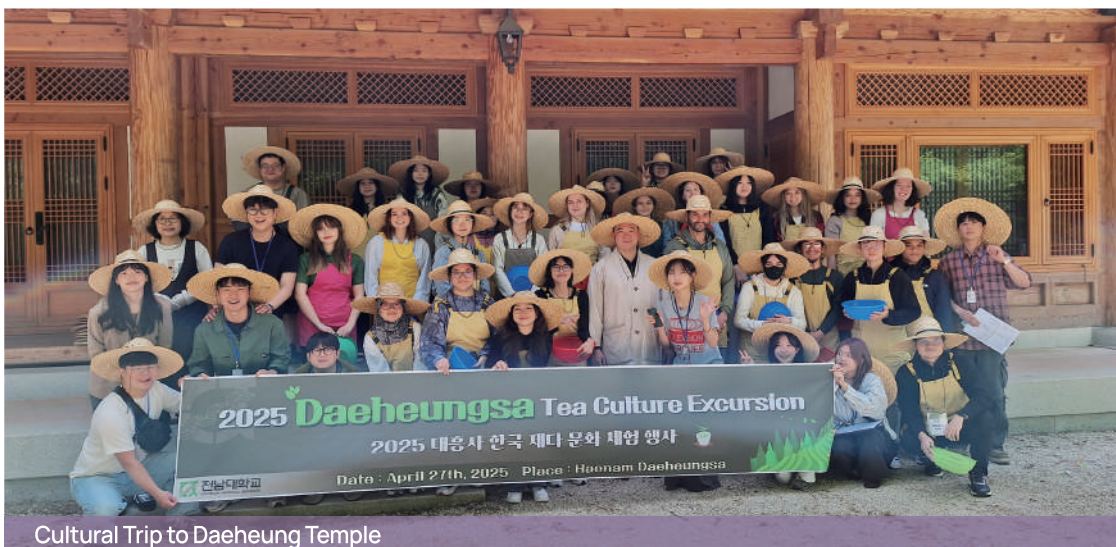
- Bus fare: approx. USD 1 per ride
- Gwangju: metro + bus / Yeosu: local bus system
- Monthly public transport budget: USD 50–60



Farewell Party for Exchange Students



CNU International Day



Cultural Trip to Daeheung Temple



05

Courses in
English



2025 Spring Semester

Program	Department	Course Title
Undergraduate	Accounting	Managerial Accounting 2
Undergraduate	Animal Bioresource Major	Growth and Developmental Biology
Undergraduate	Applied Biology	Functional Insect Genomics
Undergraduate	Architectural Engineering	Introduction to Creative Design
Undergraduate	Artificial Intelligence	Linux System
Undergraduate	Biological Sciences	Animal Physiology
Undergraduate	Biological Sciences	Introduction to Biomedical Science
Undergraduate	Biological Chemistry	Mycology
Undergraduate	Biological Chemistry	Biocontrol Science
Undergraduate	Biology Education	Animal Embryology
Undergraduate	Business Administration	Principles of Management
Undergraduate	Business Administration	Principles of Accounting
Undergraduate	Business Administration	Management Information System
Undergraduate	Business Administration	Investment Theory
Undergraduate	Business Administration	Service Marketing
Undergraduate	Business Administration	Business Ethics
Undergraduate	Business Administration	Operations Management
Undergraduate	Business Administration	Management Strategy in Digital Transformation & ESG
Undergraduate	Chemistry	Inorganic semiconductor Materials Chemistry
Undergraduate	Data Science Convergence	Machine Learning
Undergraduate	Economics	Economic Statistics
Undergraduate	Economics	Microeconomic Theory
Undergraduate	Economics	Principles of Economics 1
Undergraduate	Economics	Macroeconomic Theory
Undergraduate	Economics	Industrial Organization
Undergraduate	Economics	Introduction to Regional Development
Undergraduate	Economics	Urban and Regional Planning
Undergraduate	Education	Theories of Teaching and Learning
Undergraduate	Education	Design and Development of Educational Contents
Undergraduate	Education Innovation	Man and Science
Undergraduate	Education Innovation	American Society and Pop-culture
Undergraduate	Education Innovation	Introduction to Korean Traditional Music
Undergraduate	Education Innovation	Introductory Korean History
Undergraduate	Education Innovation	Introduction to Economics
Undergraduate	Education Innovation	The May 18 Democratic Movement and Protests
Undergraduate	Education Innovation	Everyday Korean 1
Undergraduate	Education Innovation	Everyday Korean 2
Undergraduate	Education Innovation	Everyday Korean 3
Undergraduate	Education Innovation	Everyday Korean 4

Program	Department	Course Title
Undergraduate	Education Innovation	Academic Korean 1
Undergraduate	Education Innovation	Academic Korean 2
Undergraduate	Electrical Engineering	Automatic Control Engineering
Undergraduate	Energy and Resources Engineering	Resource evaluation and Policy design
Undergraduate	English Language and Literature	British and American Culture
Undergraduate	English Language and Literature	English Grammar1
Undergraduate	English Language and Literature	English Syntax
Undergraduate	English Language and Literature	18th and 19th Century British Novel
Undergraduate	English Language and Literature	19th Century American Novel
Undergraduate	English Language and Literature	Introduction to English Linguistics
Undergraduate	English Language and Literature	English Discourse and Grammar 1
Undergraduate	English Language and Literature	The Tradition and Innovation in British Poetry
Undergraduate	English Language and Literature	Literary Theory and Criticism
Undergraduate	Environment and Energy Engineering	Engineering Mathematics 1
Undergraduate	Environment and Energy Engineering	Waste Resource Treatment and Energy Engineering
Undergraduate	Environment and Energy Engineering	Environmental Electrochemistry
Undergraduate	Environment and Energy Engineering	Environment and Safety Engineering and Practice
Undergraduate	Fiber Science and Engineering	Nano Surface Science
Undergraduate	Industrial Engineering	Design Engineering
Undergraduate	Intelligent Mobility	Vehicle NVH
Undergraduate	Materials Science & Engineering	Instrumental Analytical Methods
Undergraduate	Materials Science & Engineering	Engineering Mathematics
Undergraduate	Materials Science & Engineering	Introduction to Materials Science and Engineering 2
Undergraduate	Materials Science & Engineering	Metalworking
Undergraduate	Materials Science & Engineering	Sensor Materials Engineering
Undergraduate	Materials Science & Engineering	Physical Chemistry
Undergraduate	Mechanical Engineering	Thermodynamics
Undergraduate	Mechanical Engineering	Engineering Mathematics 1
Undergraduate	Mechanical Engineering	Applied Fluid Mechanics
Undergraduate	Mechanical Engineering	Heat Transfer
Undergraduate	Mechanical Engineering	Vehicle Dynamics and Control
Undergraduate	Mechanical Engineering	Solid mechanics
Undergraduate	Mechanical Engineering	System Dynamics and Signal Processing
Undergraduate	Mechanical Engineering	Electric vehicles
Undergraduate	Mechanical Engineering	Environmental Mechanical Engineering
Undergraduate	Mechanical Engineering	Mechanical Vibrations
Undergraduate	Molecular Biotechnology	Cell Biology 1
Undergraduate	Molecular Biotechnology	Molecular Microbiology
Undergraduate	Molecular Biotechnology	Organic Chemistry 1
Undergraduate	Molecular Biotechnology	Animal Genetic Engineering
Undergraduate	Molecular Biotechnology	Molecular Biotechnology Capstone Design
Undergraduate	Philosophy	Western Civilization: Renaissance to Enlightenment
Undergraduate	Philosophy	Western Civilization: Modernism
Undergraduate	Political Science & International Relations	American Politics
Undergraduate	Software	Embedded Software

Program	Department	Course Title
Graduate	Agriculture Chemistry	Advanced Course of Instrumental Analysis
Graduate	Agriculture Chemistry	Advanced Soil Microbiology
Graduate	Agriculture Chemistry	Advanced Industrial Microbiology
Graduate	Agriculture Chemistry	Startup Bussiness of Agricultural Chemistry 1
Graduate	Animal Industry	Advanced Biosecuirty in Animal Production
Graduate	Applied Biology	Integrated Plant and Grain Pest Insect Management
Graduate	Applied Biology	RNAi-based Functional Study of Gene in Insect
Graduate	Applied Biology	Climate change and virus transmission
Graduate	Applied Biology	Climate change and gut immunity
Graduate	Architecture and Civil Engineering	Theory of Deformation for Soils
Graduate	Architecture and Civil Engineering	Finite Element Method
Graduate	Artificial Intelligence Convergence	Topics in Artificial Intelligence
Graduate	Artificial Intelligence Convergence	Topic in Intelligent Systems
Graduate	Artificial Intelligence Convergence	Principles of Programming Language
Graduate	Artificial Intelligence Convergence	Digital Video Processing
Graduate	Artificial Intelligence Convergence	Energy Artificial Intelligence
Graduate	Artificial Intelligence Convergence	Advanced Distributed System
Graduate	Artificial Intelligence Convergence	Cybersecurity Trends
Graduate	Artificial Intelligence Convergence	Project for AI Convergence(Capston Design)
Graduate	Business Administration	Financial Statement Analysis and Valuation
Graduate	Business Administration	e-Commerce Management
Graduate	Business Administration	Organizational Behavior
Graduate	Business Administration	Human Resources Management
Graduate	Business Administration	Service Operations Management
Graduate	Business Administration	Organization Theory
Graduate	Business Administration	Sustainable Development Goals and Management Studies
Graduate	Business Administration	Management of Technology
Graduate	Chemical Engineering	Advanced Chemical Process Optimization
Graduate	Chemical Engineering	Nanoporous materials and their applications
Graduate	Chemistry	Advanced Inorganic Chemistry
Graduate	Convergence Biosystems Engineering	Advanced Biofabrication
Graduate	Data Science	Advanced Machine Learning
Graduate	Data Science	Graph Data and Network Analysis
Graduate	Data Science	Deep Learning
Graduate	Data Science	Advanced Machine Learning
Graduate	Data Science	Graph Data and Network Analysis
Graduate	Education	Artificial Intelligent and Education
Graduate	Energy and Resources Engineering	Experiments and Analysis
Graduate	Energy and Resources Engineering	Reserve Estimation and Energy Economics
Graduate	Energy and Resources Engineering	Advanced Engineering for CO2 Geological Storage
Graduate	English Language and Literature	Contemporary American Fiction: Acculturation
Graduate	English Language and Literature	Culture Studies: Critique of Violence
Graduate	Environment and Energy Engineering	Bioenergy Seminar
Graduate	Environment and Energy Engineering	Patent Mapping
Graduate	Graduate School	Korean History with the Focus on Its Modern History

Program	Department	Course Title
Graduate	Graduate School	Working in Teams
Graduate	Integrative Food, Bioscience and Bi	Animal cell culture2
Graduate	Integrative Food, Bioscience and Bi	Seminar in Food and Bio Technology1
Graduate	Integrative Food, Bioscience and Bi	Special Topics in Biochemistry 1
Graduate	Intellectual Property Convergence	Renewable energy and IP
Graduate	Law School	American Constitutional Law
Graduate	Law School	The Law of Business Enterprises
Graduate	Law School	American Criminal Law & Procedure
Graduate	Materials Science and Engineering	Advanced Mechanical Behavior Of Materials
Graduate	Materials Science and Engineering	Electronic Materials
Graduate	Materials Science and Engineering	Advanced Energy Materials Engineering
Graduate	Mechanical Engineering	Advanced Course of Applied Mathematics
Graduate	Mechanical Engineering	Fracture Mechanics
Graduate	Mechanical Engineering	Advanced Computational Materials Science
Graduate	Mechanical Engineering	Advanced dynamics
Graduate	Oceanography	Advanced Ocean Currents
Graduate	Philosophy	Studies in Cultural Philosophy



2024 Fall Semester

Program	Department	Course Title
Undergraduate	Accounting	Managerial Accounting 1
Undergraduate	Applied Biology	Insect Physiology
Undergraduate	Aquaculture	Aquatic Breeding Science and LAB
Undergraduate	Architectural Engineering	Steel Structure Design 1
Undergraduate	Artificial Intelligence	Logic Circuits
Undergraduate	Biological Sciences	Human Physiology
Undergraduate	Biology Education	Animal Physiology
Undergraduate	Biotechnology	Cell Culture Engineering & Lab
Undergraduate	Biotechnology & Bioengineering	Engineering Mathematics 2
Undergraduate	Business Administration	Principles of Management
Undergraduate	Business Administration	Principles of Accounting
Undergraduate	Business Administration	Financial Management
Undergraduate	Business Administration	Marketing Management
Undergraduate	Business Administration	Human Resources Management
Undergraduate	Business Administration	Introduction to e-Business
Undergraduate	Business Administration	Knowledge and Intellectual Property Right Management
Undergraduate	Business Administration	Principles of Marketing Research
Undergraduate	Business Administration	Global Value Chain Management
Undergraduate	Chemistry	Coordination Chemistry
Undergraduate	Communication	Digital Journalism
Undergraduate	Computer Engineering	Computer Graphics
Undergraduate	Data Science Convergence	Artificial intelligence robot practice
Undergraduate	Economics	Microeconomic Theory
Undergraduate	Economics	Mathematical Analysis for Economics
Undergraduate	Economics	Principles of Economics 2
Undergraduate	Economics	Macroeconomic Theory
Undergraduate	Economics	Law and Economics
Undergraduate	Economics	National and Regional Planning
Undergraduate	Economics	Regional innovation theory and knowledge cluster
Undergraduate	Education	Sociology of Education
Undergraduate	Education	Instructional Design and Development
Undergraduate	Education	AI Applications for Education
Undergraduate	Education Innovation	Man and Science
Undergraduate	Education Innovation	Environmental Science
Undergraduate	Education Innovation	American Society and Pop-culture
Undergraduate	Education Innovation	Introductory Korean History
Undergraduate	Education Innovation	The Understanding of the Korean Folklore
Undergraduate	Education Innovation	Introduction to Economics
Undergraduate	Education Innovation	The May 18 Democratic Movement and Protests
Undergraduate	Education Innovation	Everyday Korean 1
Undergraduate	Education Innovation	Everyday Korean 2
Undergraduate	Education Innovation	Everyday Korean 3
Undergraduate	Education Innovation	Everyday Korean 4
Undergraduate	Education Innovation	Academic Korean 1
Undergraduate	Education Innovation	Academic Korean 2
Undergraduate	Electrical Engineering	Introduction to Engineering Design
Undergraduate	English	English Vocabulary

Program	Department	Course Title
Undergraduate	English	Understanding English Language Education
Undergraduate	English Education	English Speech
Undergraduate	English Education	Beginning English Conversation
Undergraduate	English Education	Introduction to English Linguistics
Undergraduate	English Education	Intermediate English Writing
Undergraduate	English Education	Modern English Grammar
Undergraduate	English Education	Applied English Phonetics
Undergraduate	English Education	Teaching Speaking in EFL
Undergraduate	English Language and Literature	English Grammar2
Undergraduate	English Language and Literature	American Poetry
Undergraduate	English Language and Literature	Modern American Novel
Undergraduate	English Language and Literature	History of American Literature
Undergraduate	English Language and Literature	Survey of British Literature Since the 19th Century
Undergraduate	English Language and Literature	English Discourse and Grammar 2
Undergraduate	English Language and Literature	English Literature and Film Studies
Undergraduate	English Language and Literature	Rhetoric and Digital Literacy
Undergraduate	Environment and Energy Engineering	Probability and Statistics
Undergraduate	Environment and Energy Engineering	Green Energy
Undergraduate	Environment and Energy Engineering	Air Pollution Management
Undergraduate	Environment and Energy Engineering	Hazardous Wastes Management & Soil Remediation
Undergraduate	Environment and Energy Engineering	Energy System Design
Undergraduate	Environment System Engineering	Hydrology
Undergraduate	Industrial Engineering	System Analysis & Design
Undergraduate	Intelligent Mobility	Dynamics
Undergraduate	International Trade Commerce	International Finance
Undergraduate	International Trade Commerce	Verbal Expressions in English for International Commerce4
Undergraduate	International Trade Commerce	Macroeconomics
Undergraduate	Major of Systems Biology	NeuroBiochemistry
Undergraduate	Marine Bio Food Science	Food Enzymology
Undergraduate	Marine Bio Food Science	Animal Cell Culture and Lab.
Undergraduate	Marine Production Management	Maritime English
Undergraduate	Materials Science & Engineering	Mechanics of Materials
Undergraduate	Materials Science & Engineering	Electrical and Magnetic Properties of Materials
Undergraduate	Materials Science & Engineering	Electroceramics
Undergraduate	Mathematics	Numerical Analysis and Laboratory
Undergraduate	Mechanical Design Engineering	Dynamics
Undergraduate	Mechanical Engineering	Fluid Mechanics
Undergraduate	Mechanical Engineering	Dynamics
Undergraduate	Mechanical Engineering	Applied Thermodynamics
Undergraduate	Mechanical Engineering	Applied Solid Mechanics
Undergraduate	Mechanical Engineering	Applied Heat Transfer
Undergraduate	Mechanical Engineering	Intelligent Vehicle
Undergraduate	Mechanical Engineering	Fuel Cell Vehicles
Undergraduate	Mechanical Engineering	Machine Learning for Mechanical Engineering
Undergraduate	Mechanical Engineering	Advanced Mechanical Engineering
Undergraduate	Molecular Biotechnology	Organic Chemistry 2
Undergraduate	Pharmacy	Cosmeticology
Undergraduate	Philosophy	Western Civilization: Romanticism to Impressionism
Undergraduate	Philosophy	Western Civilization: Postmodernism to the Contemporary Era
Undergraduate	Political Science & International Relations	International and Non Government Organizations
Undergraduate	Political Science & International Relations	American Politics
Undergraduate	Polymer Engineering	Polymeric nano-composites
Undergraduate	Psychology	Addiction Psychology
Undergraduate	Robotics Engineering Convergence	Robotics Practice 1

Program	Department	Course Title
Undergraduate	Sinology	East Asian Regional Study
Undergraduate	Sinology	History of Chinese Literature
Undergraduate	Sociology	Urban Sociology
Undergraduate	Software Engineering	Embedded Software
Undergraduate	Veterinary Medicine	Veterinary Oncology
Graduate	Agriculture Chemistry	Advanced Agricultural Environment Chemistry
Graduate	Agriculture Chemistry	Seminar in Agricultural Chemistry 1
Graduate	Agriculture Chemistry	Advanced Plant Resources Science
Graduate	Agriculture Chemistry	Advanced biofertilizer
Graduate	Agriculture Chemistry	Applied Plant Resources
Graduate	Agriculture Chemistry	Advanced Biocontrol Science
Graduate	Agriculture Chemistry	Mycotoxigenology
Graduate	Animal Industry	Advanced Swine Production
Graduate	Applied Biology	Advanced Insect Biochemistry and Molecular Biology
Graduate	Applied Biology	Advanced Scientific Communication and Writing Papers
Graduate	Architecture and Civil Engineering	Soil Dynamics
Graduate	Architecture and Civil Engineering	Advanced Probability-Based Design
Graduate	Artificial Intelligence Convergence	Topics in Software Engineering
Graduate	Artificial Intelligence Convergence	Advanced Big Data Analysis
Graduate	Artificial Intelligence Convergence	Bio-Mechatronics
Graduate	Artificial Intelligence Convergence	Shared Data Analysis
Graduate	Artificial Intelligence Convergence	Advanced Project for AI Convergence(Capston Design)
Graduate	Artificial Intelligence Convergence	3D Multimedia
Graduate	Business Administration	Management Information System
Graduate	Business Administration	Strategic Management
Graduate	Business Administration	Entrepreneurship/ Business Ethics
Graduate	Business Administration	Management of Technology and Innovation
Graduate	Business Administration	Management Information Systems
Graduate	Business Administration	Service Marketing
Graduate	Chemical Engineering	Advanced Chemical Engineering Design
Graduate	Chemical Engineering	Advanced material analysis for IP
Graduate	Chemistry	Inorganic Metal Precursor in Semiconductor
Graduate	Computer Engineering	Internet of Things
Graduate	Computer Engineering	Computational Intelligence
Graduate	Computer Engineering	AdvancedMultimedia
Graduate	Computer Engineering	Mobile communication
Graduate	Data Science	Deep Learning
Graduate	Data Science	Natural Language Processing
Graduate	Data Science	Advanced Deep Learning
Graduate	Dental Bioscience	Advanced Oral Medicine
Graduate	Education	Theory of Instructional Design and Development
Graduate	Energy and Resources Engineering	Advanced Well Test Analysis
Graduate	English	Introducing translation studies
Graduate	English	Techniques for teaching ESL/EFL
Graduate	English	Mid-CenturyAmerican Literary Criticism
Graduate	English	EnglishPhonetics
Graduate	English	ContemporaryEnglishSyntax
Graduate	English Language and Literature	Pro-seminar in English Literature
Graduate	English Language and Literature	American Ecopoetics and Natural Communities
Graduate	Environment and Energy Engineering	Advanced Environmental Microbiology
Graduate	Environment and Energy Engineering	Patent Mapping
Graduate	Fisheries Science	AdvancedMolecularGenetics
Graduate	Graduate School	Korean History with the Focus on Its Modern History
Graduate	Integrative Food, Bioscience and Biotechnology	Special Topics in Chemical Biology

Program	Department	Course Title
Graduate	Intelligent Business	Decision making methodology
Graduate	Law School	American Private Law
Graduate	Law School	The Law of Contract in America
Graduate	Materials Science and Engineering	Battery Materials
Graduate	Materials Science and Engineering	Materials Science and Engineering Capston Design
Graduate	Materials Science and Engineering	Physics-based Impedance Spectroscopy
Graduate	Mechanical Engineering	Advanced Solid Mechanics
Graduate	Mechanical Engineering	Advanced Thermodynamics
Graduate	Mechanical Engineering	Advanced Fluid Mechanics
Graduate	Mechanical Engineering	Autonomous Mobile Robot
Graduate	Mechanical Engineering	Medical Robotics
Graduate	Oceanography	Circulation in Coastal Ocean
Graduate	Pharmacy	Advanced Medicinal Chemistry II
Graduate	Pharmacy	Brain sciences and related disorders
Graduate	Pharmacy	Advanced drug delivery system1
Graduate	Pharmacy	Introduction to cancer nanomedicine
Graduate	Pharmacy	Pharmacology of Cardiovascular Disease
Graduate	Pharmacy	Advanced Topics in Protein Structure
Graduate	Pharmacy	Seminar on Pharmaceutical Science 1
Graduate	Pharmacy	Seminar on Pharmaceutical Science 2
Graduate	Pharmacy	Advanced Biomaterials in Pharmaceuticals/Therapeutics
Graduate	Philosophy	Studies in Cultural Philosophy
Graduate	Physics	Surface Physics
Graduate	Sustainable architecture ICT convergence	Understanding carbon neutrality and embodied carbon
Graduate	Veterinary Medicine	Trends of Recent Vaccine Development
Graduate	Veterinary Medicine	Cell Therapy
Graduate	Veterinary Medicine	Methodology in Animal Experiments.
Graduate	Veterinary Medicine	Clinical Immune diseases

Korean Language Intensive Program

At CNU Yeosu Campus, international students with a Korean language proficiency below TOPIK 4 can enroll in the following courses. Students are required to take two Korean culture courses and may earn up to 18 credits

Semester	Spring / Fall	
Course	Language Courses	Korean Culture Courses
Beginner Track	Korean Language Beginner Course 1 (Listening)	Korea Learning Through Media Korean Society and Lifestyle
	Korean Language Beginner Course 2 (Vocabulary & Reading)	
	Korean Language Beginner Course 3 (Speaking)	
	Korean Language Beginner Course 4 (Grammar & Writing)	
Intermediate Track	Korean Language Intermediate Course 1 (Listening)	College Writing and Speaking College Reading in Modern Korean
	Korean Language Intermediate Course 2 (Vocabulary & Reading)	
	Korean Language Intermediate Course 3 (Speaking)	
	Korean Language Intermediate Course 4 (Grammar & Writing)	



06

Off-Campus
Activities



Off-Campus Activities

Gwangju International Center [GIC]

Korean Class



- 7-Week Courses
- Basic, Intermediate Level, and Tutoring Program

Global Cultural & Language Class



- Learning about other cultures and languages
- Every Wednesday at 7PM / GIC

GIC Library



- Approximately 5,000 Korean & English Books
- Registered GIC members can rent books for free of charge
- Location : GIC 2nd floor

Gwangju International Community Day



- A world culture festival featuring traditional food, activities, performances, and opportunities to connect with international communities

World Human Rights Cities Forum



- International Academic Conference on Human Rights Cities with global human rights activists

Gwangju Foreign Resident Support Center



- Support for foreign residents in Gwangju
- Interpretation and translation
- Residence and labor consultation
- Korean language education
- Country-specific community support

Gwangju Foreign Language Network [GFN]

- Established in 2008, this English broadcasting service provides diverse information about the city of Gwangju and the surrounding areas for foreign residents in Gwangju and Jeollanamdo as well as for Korean Citizens. It covers a wide range of topics, from politics to culture.
- Website : gfn.or.kr
- Frequencies : Gwangju FM 98.7MHz / Yeosu FM 93.7MHz
- Air Time : 24 hours 365 days

Social Media

Chonnam National University (CNU)



@chonnam_univ



CNU



Yeosu Campus

Office of International Affairs (OIA)



@studyatchonnam



@studyatchonnam



@cnu oia

CNU Global Community



@cnu_cic_official



@chonnam_oia



@chonnamtribune



**Chonnam National University
Office of International Affairs**

G&R Hub 2F, Suite 214, 77 Yongbong-ro, Buk-gu, Gwangju 61186 South Korea
international.jnu.ac.kr